

WORLD'S LEADING EXHIBITION FOR WEARABLE TECHNOLOGY!

11th WEARABLE EXPO

Wearable Device & Technology Expo

Dates: January 22[Wed] – 24[Fri], 2025

Venue: Tokyo Big Sight, Japan

Organised by: RX Japan Ltd.



INDEX

➤ Click below and jump to the page

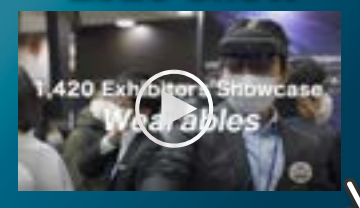
➤ <u>Scenes from Previous Show</u>	P3
➤ <u>Show Outline</u>	P4
➤ <u>About Visitors</u>	P5
➤ <u>Floor Plan & Concurrent Shows</u>	P6
➤ <u>Concurrent Conference</u>	P7
➤ <u>Schedule until the Show</u>	P8
➤ <u>How to Join as an Exhibitor</u>	P9

World's Leading Exhibition for Wearable Device & Technology

Scenes from Previous Show



Click for the video of 2023 Show



B2B Exhibition for Wearable Industry

Exhibitors

Following Manufacturers / Venders:

- **Wearable Devices**
- **Business Improvement Solutions with Wearable Devices**
 - Manufacturing, Logistics, Service, Construction, Medical, Welfare etc.
- **Development Technologies**
 - Electronics Components/ Materials
 - AR/VR Technologies
 - Sensors, New Materials etc.

Business Meetings

- ◆ **New Product/ Technology Introduction**
- ◆ **Technical Consultation**
- ◆ **Price/Delivery Date Arrangement**

Visitors

- **Wearable Device Users**
 - Manufacturing, Construction, Logistics, Maintenance
 - Medical, Welfare, Fitness
 - Entertainment, Service, Retail etc.
- **Wearable Device Manufacturers**
 - R&D
 - Product Planning, Production Technology
 - Purchase/Procurement
 - Testing/Analysis etc.

Wearable Users & Manufacturers will Visit the Show

Visitor Profile (expected / excerpts)

Wearable Users

- AEON
 - ANA HOLDINGS
 - BENESSE HOLDINGS
 - CANON
 - CENTRAL SPORTS
 - EAST JAPAN RAILWAY
 - FAMILYMART
 - HITACHI
 - HITACHI TRANSPORT SYSTEM
 - IHI
 - ISETAN MITSUKOSHI HOLDINGS
 - JAPAN AIRLINES
 - JFE HOLDINGS
 - JGC HOLDINGS
 - KAJIMA
 - KASHIMA ANTLERS FC
 - KAWASAKI BRAVE THUNDERS
 - KINTETSU WORLD EXPRESS
 - KONAMI HOLDINGS
 - LAWSON
 - MAEDA
 - MITSUBISHI CHEMICAL
 - MITSUBISHI ELECTRIC
 - NIPPON EXPRESS
 - NISSAN MOTOR
 - OBAYASHI
 - OG SPORTS
 - ORIENTAL LAND
 - RENAISSANCE
 - SEINO HOLDINGS
 - SEVEN & I HOLDINGS
 - SHIMIZU
 - SHISEIDO
 - SOMPO CARE
 - SPORTS CLUB NAS
 - TAISEI
 - TAKEDA PHARMACEUTICAL
 - TAKENAKA
 - TIPNESS
 - TOKYO FOOTBALLCLUB
 - TOKYU SPORTS OASIS
 - TOYOTA MOTOR
 - YAMATO HOLDINGS
 - YOKOHAMA DeNA BAYSTARS
 - YOMIURI GIANTS
 - YOSHINOYA HOLDINGS
 - ZENSHO HOLDINGS
- etc.

Wearable Manufacturers

Japanese Manufacturers

- BONX
 - BROTHER INDUSTRIES
 - CANON
 - CASIO COMPUTER
 - CITIZEN WATCH
 - ENHANLABO
 - FUJITSU
 - HITACHI
 - HITACHI HIGH TECHNOLOGIES
 - HOYA
 - JINS
 - KONICA MINOLTA
 - KYOCERA
 - MICROSOFT JAPAN
 - MITSUFUJI
 - MOFF
 - NEC
 - NTT DOCOMO
 - OMRON HEALTHCARE
 - PANASONIC
 - RICOH
 - RION
 - SEIKO
 - SEIKO EPSON
 - SONY
 - SUN
 - TDK
 - TOSHIBA
 - WESTUNITIS
- etc.

Overseas Manufacturers

- APPLE
 - ASUS TEK
 - FITBIT
 - FOSSIL
 - GARMIN
 - GOOGLE
 - HON HAI PRECISION
 - HUAWEI TECHNOLOGIES
 - LG ELECTRONICS
 - PEBBLE
 - POLAR ELECTRO
 - RECON INSTRUMENTS
 - SAMSUNG ELECTRONICS
 - VUFINE
 - VUZIX
 - XIAOMI
- etc.

Held with Large Scale Industrial Exhibitions

Floor Plan (Tokyo Big Sight, Preliminary)

11th WEARABLE EXPO Wearable Device & Technology Expo

Wearable Device Area

Exhibit Profile

Wearable Device/Solutions

- Smart Glasses
- Smart Wear
- Wearable Cameras
- Smartwatches
- Hearable Devices
- Smart Bands
- Powered Exoskeletons
- etc.



Wearable Development Area

Development Technology Zone

Exhibit Profile

- Highly-functional Materials/Electric Materials (Stretchable/Flexible Materials, Conductive Fiber, Conductive Materials, etc.)
- Electronic Components
- Semiconductor/Sensor
- Outsourcing Development/Manufacturing
- Development Software/Engineers
- Inspection/Testing/Measuring Technologies
- Printing Board
- Processing Technologies
- Devices, Actual Machines
- AR/VR Technologies
- etc.

Electronic/Automotive Manufacturers and Robot Users from Concurrent Shows Also Visit the Show

39th NEPCON JAPAN Electronics R&D and Manufacturing Technology Expo

Visitor Profile

Engineers & Executives of Following Manufacturers, Electronic Devices, Electronic Components, Semiconductors, etc.

17th AUTOMOTIVE WORLD World's Leading Exhibition for Advanced Automotive Technologies

Visitor Profile

Engineers & Executives of Automakers, Automotive Component Manufacturers, etc.

9th RoboDEX

Visitor Profile

Engineers & Executives of Robot Manufacturers, Robotics System Integrators, Robot Users, etc.

3rd GREEN FACTORY Expo

Visitor Profile

Management & Related Professionals from Manufacturers, Distributors, Warehousing Companies, etc.

9th SMART FACTORY Expo

Visitor Profile

Engineers & Executives from Automobile, Automotive Components, Electronic Device/Components, Medicine, Cosmetics, Food, etc.

4th SMART LOGISTICS Expo

Visitor Profile

Engineers & Executives from Electric Manufacturing, Automobile Manufacturing, Food, Logistics Company, etc.

Industry Leaders Speak at Conference

Conference by top industry leaders is held with the exhibition.

Key persons of industry giants and fast growing companies address hot topics at the conference.

List of speakers from past shows (excerpts)



Yiwan Wong
Director, Technology
Partnerships, Reality Labs,
Meta Platforms Inc.



Hendrik Witt
Chief Product Officer,
TeamViewer AG



Joern Watzke
Senior Director,
Garmin Health
Global Business
Development & Sales,
Garmin GmbH



Michael Chapp
COO,
Oura Ring



Makoto Ito
Country Manager,
RealWear Japan LLC



Shinji Chiba
Quality Engineer,
National Technology Office,
Microsoft Japan Co., Ltd.



Mikio Iwamura
Executive Vice President,
NTT QONOQ Inc.



Makito Nago
Acting General Manager, Smart &
Advanced Technology Development
Section, Production Engineering
Technology Dept., Taisei Advanced
Center of Technology,
Taisei Corp.



Atsunari Tsuda
Deputy General Administrative
Manager, DX Div.,
Seiko Epson Corp.



Ichiro Amimori
Co-Founder & CEO,
Xenoma Inc.



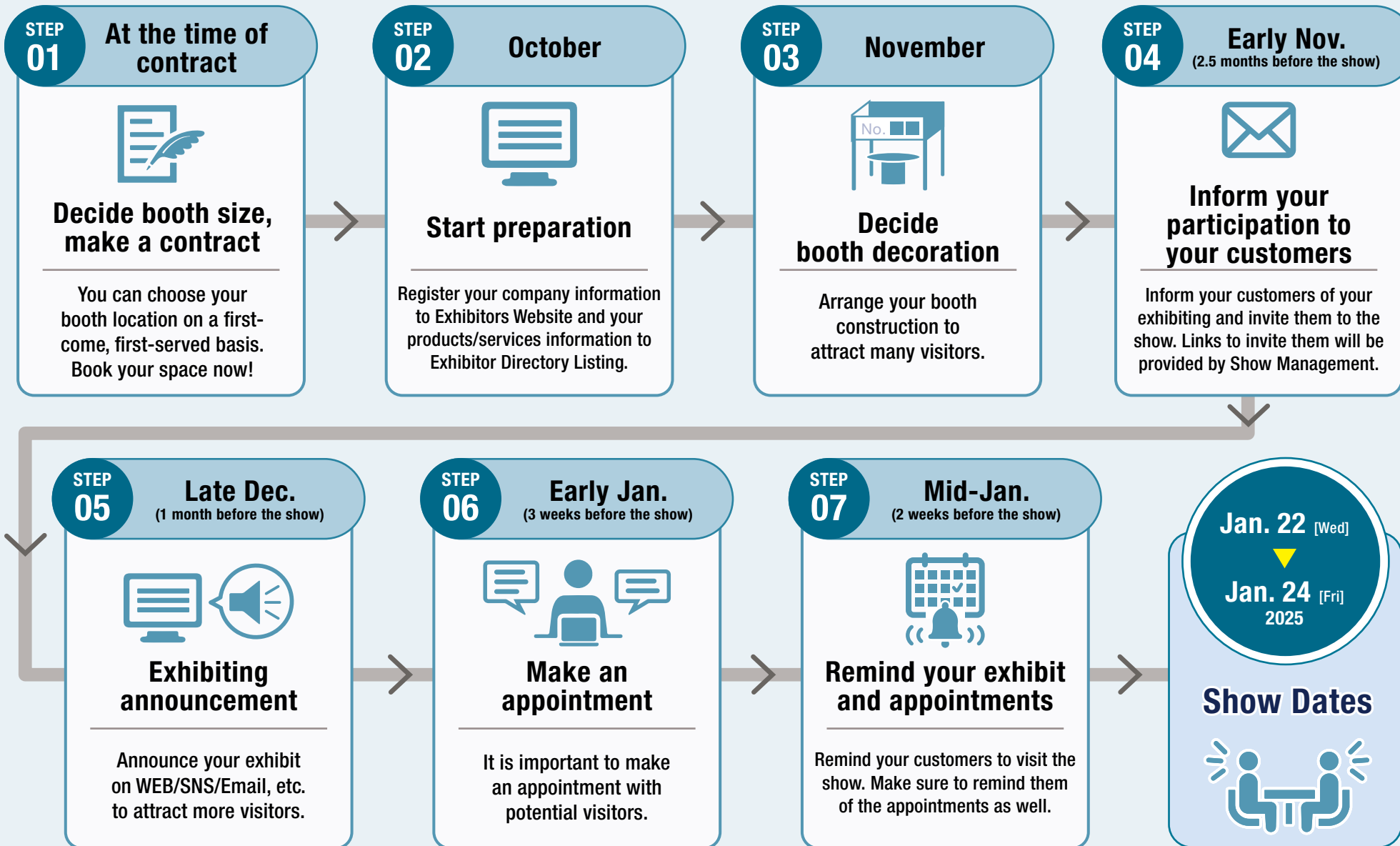
Yuichi Murai
Deputy General Manager,
Powertrain Production
Engineering and
Development Div.,
Nissan Motor Co., Ltd.



Ayumu Mitera
CEO,
Mitsufuji Corp.

Honorifics omitted. In random order. Speakers' affiliations and positions are those at the time of the conference. Affiliations and positions may be omitted due to the space limit.

Schedule until the Show



How to Join as an Exhibitor

- 1** Please **contact Show Management** with your product information and your preferable exhibit space size.
- 2** Show Management will **offer available spaces** in the most suitable exhibit area for your products.
- 3** Please **choose your preferable location** and submit the space contract form.

Please see below for the cost information and the floor plan.



Participation Cost



Floor Plan



Contract

